

POLY[®]CONN

Servicing Your Pneumatic Needs For Over 40 Years

VALVES

EMAIL

insidesales@polyconn.com

WEBSITE

www.polyconn.com

QUESTIONS

(763) 559-0388



Features & Specifications for Low Flow Coded Relief Valves

FEATURES

- Seat Cap and Piston C360 Brass (ASTM B-16), 17-7 Stainless Steel Spring and Silicone Seal.
- Bubble tight to within 5 PSI for set pressure 50 PSI or less.
- Bubble tight to within 10% for set pressures greater than 50 PSI.
- 100% testing or 2.5 AQL sample testing, conforming to API 527.
- Stamped with the UV and NB symbols.
- Everseal 483 sealant standard.

USES

- Applications: Compact size low flow.

SPECIFICATIONS

TEMPERATURE RANGE	PRESSURE RANGE	SET PRESSUR TOLARANCE
-65°F to 400°F (-53°C - 204°C)	75 - 200 PSI	±3% of Set Pressure



Part #	MAX PSI	NPT(M)	OAL	QTY
PCSR-02-75	75	1/8"	1.70"	1
PCSR-02-125	125	1/8"	1.70"	1
PCSR-02-150	150	1/8"	1.70"	1
PCSR-02-200	200	1/8"	1.70"	1
PCSR-04-75	75	1/4"	1.70"	1
PCSR-04-125	125	1/4"	1.70"	1
PCSR-04-135	135	1/4"	1.70"	1
PCSR-04-150	150	1/4"	1.70"	1
PCSR-04-200	200	1/4"	1.70"	1
PCSR-12-135	135	1"	1.70"	1
PCSR-12-160	160	1"	1.70"	1

Features & Specifications for High Flow Coded Relief Valves

FEATURES

- Seat Cap and Piston C360 Brass (ASTM B-16), 17-7 Stainless Steel Spring and Silicone Seal.
- Bubble tight to within 5 PSI for set pressure 50 PSI or less.
- Bubble tight to within 10% for set pressures greater than 50 PSI.
- 100% testing or 2.5 AQL sample testing, conforming to API 527.
- Stamped with the UV and NB symbols.
- Everseal 483 sealant standard.

USES

- Applications: Small air compressors with high flow requirements.

SPECIFICATIONS

TEMPERATURE RANGE	PRESSURE RANGE	SET PRESSUR TOLARANCE
-65°F to 400°F (-53°C - 204°C)	25 - 450 PSI	±3% of Set Pressure



HIGH FLOW CODED RELIEF VALVES 1/8"

Part #	MAX PSI	NPT(M)	OAL	HEX	QTY
PCST-02-25	25	1/8"	1.75"	11/16"	1
PCST-02-35	35	1/8"	1.75"	11/16"	1
PCST-02-50	50	1/8"	1.75"	11/16"	1
PCST-02-65	65	1/8"	1.75"	11/16"	1
PCST-02-70	70	1/8"	1.75"	11/16"	1
PCST-02-75	75	1/8"	1.75"	11/16"	1
PCST-02-125	125	1/8"	1.75"	11/16"	1
PCST-02-150	150	1/8"	1.75"	11/16"	1
PCST-02-165	165	1/8"	1.75"	11/16"	1
PCST-02-175	175	1/8"	1.75"	11/16"	1
PCST-02-200	200	1/8"	1.75"	11/16"	1

HIGH FLOW CODED RELIEF VALVES 1/4"

Part #	MAX PSI	NPT(M)	OAL	HEX	QTY
PCST-04-25	25	1/4"	1.75"	11/16"	1
PCST-04-35	35	1/4"	1.75"	11/16"	1
PCST-04-40	40	1/4"	1.75"	11/16"	1
PCST-04-50	50	1/4"	1.75"	11/16"	1
PCST-04-75	75	1/4"	1.75"	11/16"	1
PCST-04-90	90	1/4"	1.75"	11/16"	1
PCST-04-100	100	1/4"	1.75"	11/16"	1
PCST-04-125	125	1/4"	1.75"	11/16"	1
PCST-04-140	140	1/4"	1.75"	11/16"	1
PCST-04-150	150	1/4"	1.75"	11/16"	1
PCST-04-200	200	1/4"	1.75"	11/16"	1
PCST-04-250	250	1/4"	1.75"	11/16"	1
PCST-04-295	295	1/4"	1.75"	11/16"	1
PCST-04-300	300	1/4"	1.75"	11/16"	1
PCST-04-350	350	1/4"	1.75"	11/16"	1

HIGH FLOW CODED RELIEF VALVES 3/8"

Part #	MAX PSI	NPT(M)	OAL	HEX	QTY
PCST-06-25	25	3/8"	1.75"	11/16"	1
PCST-06-40	40	3/8"	1.75"	11/16"	1
PCST-06-50	50	3/8"	1.75"	11/16"	1
PCST-06-70	70	3/8"	1.75"	11/16"	1
PCST-06-80	80	3/8"	1.75"	11/16"	1
PCST-06-100	100	3/8"	1.75"	11/16"	1
PCST-06-125	125	3/8"	1.75"	11/16"	1
PCST-06-150	150	3/8"	1.75"	11/16"	1
PCST-06-175	175	3/8"	1.75"	11/16"	1
PCST-06-200	200	3/8"	1.75"	11/16"	1

HIGH FLOW CODED RELIEF VALVES 1/2"

Part #	MAX PSI	NPT(M)	OAL	HEX	QTY
PCST-08-25	25	1/2"	2.69"	7/8"	1
PCST-08-100	100	1/2"	2.69"	7/8"	1
PCST-08-165	165	1/2"	2.69"	7/8"	1
PCST-08-175	175	1/2"	2.69"	7/8"	1

Features & Specifications for Low Flow Relief Valves

FEATURES

- Seat Cap and Piston C360 Brass (ASTM B-16), 17-7 Stainless Steel Spring and Silicone Seal.
- Bubble tight to within 5 PSI for set pressure 50 PSI or less.
- Bubble tight to within 10% for set pressures greater than 50 PSI.
- 100% testing or 2.5 AQL sample testing, conforming to API 527.
- Stamped with the UV and NB symbols.
- Everseal 483 sealant standard.

USES

- Applications: Compact size low flow

SPECIFICATIONS

TEMPERATURE RANGE	PRESSURE RANGE	SET PRESSUR TOLARANCE
-65°F to 400°F (-53°C - 204°C)	25 - 150 PSI	±3% of Set Pressure



LOW FLOW RELIEF VALVES 1/8"

Part #	MAX PSI	NPT(M)	OAL	HEX	QTY
PCNP-02-20	20	1/8"	1.70"	9/16"	1
PCNP-02-25	25	1/8"	1.70"	9/16"	1
PCNP-02-30	30	1/8"	1.70"	9/16"	1
PCNP-02-45	45	1/8"	1.70"	9/16"	1
PCNP-02-50	50	1/8"	1.70"	9/16"	1
PCNP-02-65	65	1/8"	1.70"	9/16"	1
PCNP-02-75	75	1/8"	1.70"	9/16"	1
PCNP-02-100	1000	1/8"	1.70"	9/16"	1
PCNP-02-125	125	1/8"	1.70"	9/16"	1
PCNP-02-150	150	1/8"	1.70"	9/16"	1

LOW FLOW RELIEF VALVES 1/4"

Part #	MAX PSI	NPT(M)	OAL	HEX	QTY
PCNP-04-05	05	1/4"	1.70"	9/16"	1
PCNP-04-25	25	1/4"	1.70"	9/16"	1
PCNP-04-40	40	1/4"	1.70"	9/16"	1
PCNP-04-50	50	1/4"	1.70"	9/16"	1
PCNP-04-60	60	1/4"	1.70"	9/16"	1
PCNP-04-65	65	1/4"	1.70"	9/16"	1
PCNP-04-70	70	1/4"	1.70"	9/16"	1
PCNP-04-75	75	1/4"	1.70"	9/16"	1
PCNP-04-90	90	1/4"	1.70"	9/16"	1
PCNP-04-100	100	1/4"	1.70"	9/16"	1
PCNP-04-120	120	1/4"	1.70"	9/16"	1
PCNP-04-125	125	1/4"	1.70"	9/16"	1
PCNP-04-150	150	1/4"	1.70"	9/16"	1
PCNP-04-175	175	1/4"	1.70"	9/16"	1
PCNP-04-200	200	1/4"	1.70"	9/16"	1
PCNP-04-250	250	1/4"	1.70"	9/16"	1

Features & Specifications for Vacuum Relief Valves

FEATURES

- C360 machined brass body, stainless steel spring, nylon piston and nitrile seal.
- PCVR-04 has stainless steel piston and seal.
- Bubble tight to within 5 PSI for set pressure 50 PSI or less.
- Bubble tight to within 10% for set pressures greater than 50 PSI.
- 100% testing or 2.5 AQL sample testing, conforming to API 527.
- Everseal 483 sealant standard.

USES

- Applications: Used in systems to maintain a desired vacuum level.

SPECIFICATIONS

TEMPERATURE RANGE	PRESSURE RANGE	SET PRESSUR TOLARANCE
-65°F to 250°F (-53°C - 121°C)	0-27" Hg	±3% of Set Pressure



Part #	NPT(M)	QTY
PCVR-04	1/4"	1
PCVR-06	3/8"	1
PCVR-12	3/4"	1

Features & Specifications for Sleeve Valve

Sleeve valves combine high flow capability with short stroke in a small package. Unlike ball valves, sleeve valves do not require space for a handle. Sleeve valves features smooth opening/closing operation. Outlet is exhausted to atmosphere when the valve is closed.

SPECIFICATIONS

TEMPERATURE RANGE	WORKING PRESURE	MATERIAL
41°F to 140°F (5°C - 60°C)	0-140 PSI 0-10 kg/cm ²	Body: Brass Sleve: Anodized Aluminum



Part #	NPT M & F	OAL	QTY
PCSLV-02	1/8"	2.688"	1
PCSLV-04	1/4"	2.844"	1
PCSLV-06	3/8"	3"	1
PCSLV-08	1/8"	3.625"	1

Features & Specifications for Slide Valve

The slide valve can be considered a reversing ON-OFF valve. When in the closed position, it allows the used air to exit to the atmosphere.

SPECIFICATIONS		
TEMPERATURE RANGE	WORKING PRESURE	MATERIAL
-4°F to 176°F (-20°C - 80°C)	4-145 PSI	Stem: Nickel Plated Brass Sleeve: Aluminum



Part #	NPT F	OAL	QTY
PCSLVA-02	1/8"	1.890"	1
PCSLVA-04	1/4"	2.283"	1
PCSLVA-06	3/8"	2.756"	1

Features & Specifications for Inline Check Valve

Check valves allow air to flow in only one direction. They operate directly with the air that passes through. Check valves are normally used as safety devices, permitting air pressure in a part of the circuit. The internal spring keeps the valve closed.

SPECIFICATIONS		
TEMPERATURE RANGE	WORKING PRESURE	COMPONENT PARTS AND MATERIAL
-4°F to 176°F (-20°C - 80°C)	29-116 PSI	<ul style="list-style-type: none">Nickel Plated Brass BodyNBR O-RingSteel SpringNickel plated Brass Shutter



Part #	NPT F	OAL	QTY
PCCVA-02	1/8"	1.437"	1
PCCVA-04	1/4"	1.85"	1

Features & Specifications for Pilot Operated Check Valve

FEATURES

- Threaded Banjo or Push to Connect Fittings
- NPT Male threads have sealant applied

USES

- Pilot operated check valve is used in applications requiring control of media in one direction.
- Provides a “release” from the “checking” function.
- For use with Pneumatic Cylinders.
- To lock a cylinder in place to hold a position.

SPECIFICATIONS

TEMPERATURE RANGE	OPERATING PRESSURE RANGE	MATERIAL
14°F to 158°F (-10°C - 70°C)	1 bar - 10 bar	Body: Anodized Aluminum Thread: Nickel Plated Brass



Part #	NPT M & F	OAL	Max Tightening Torque	QTY
PCBCV-2	1/8"	1.61"	5.1 lbs/ft	1
PCBCV-4	1/8"	1.89"	11.0 lbs/ft	1
PCBCV-6	1/8"	2.17"	14.7 lbs/ft	1
PCBCV-8	1/8"	2.58"	14.7 lbs/ft	1

Part #	PTC	NPT F	OAL	Max Tightening Torque	QTY
PCBCV-2P	1/8"	1/8"	1.61"	5.1 lbs/ft	1
PCBCV-4P	1/8"	1/8"	1.89"	11.0 lbs/ft	1
PCBCV-6P	1/8"	1/8"	2.17"	14.7 lbs/ft	1

Features & Specifications for Right Angle Flow Control Valve

SPECIFICATIONS

TEMPERATURE RANGE	WORKING PRESURE	COMPONENT PARTS AND MATERIAL
-4°F to 176°F (-20°C - 80°C)	Vacuum-250 PSI	<ul style="list-style-type: none">Nickel Plated Brass BodyNBR O-Ring303 Stainless Steel Shaft Clip

METERED OUT



Part #	NPT M & F	OAL	QTY
PCBFC-2	1/8"	1.181"	1
PCBFC-4	1/4"	1.417"	1
PCBFC-6	3/8"	1.614"	1
PCBFC-8	1/2"	N/A	1

METERED IN

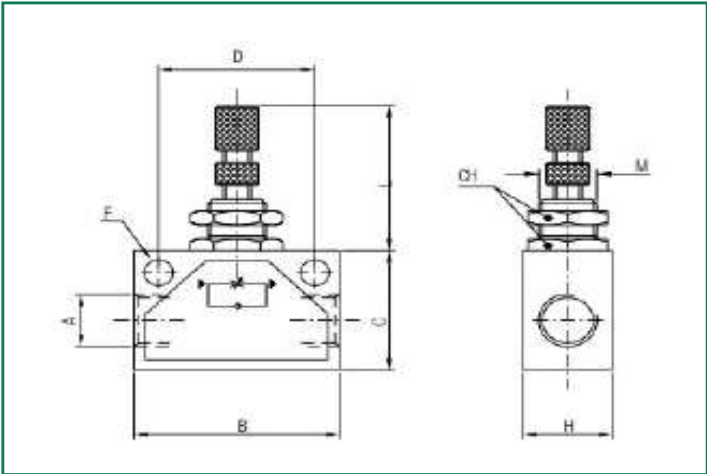


Part #	NPT M & F	OAL	QTY
PCBFC-2R	1/8"	1.181"	1
PCBFC-4R	1/4"	1.417"	1

Features & Specifications for Inline Flow Control Valve

SPECIFICATIONS

TEMPERATURE RANGE	WORKING PRESURE	COMPONENT PARTS AND MATERIAL
-4°F to 176°F (-20°C - 80°C)	Vacuum-250 PSI	<ul style="list-style-type: none"> • Brass Adjusting Knob • Brass Nut • Brass Locking Nut • Brass Nipple • Anodized Aluminum Body • NBR O-Ring • Steel SPring • Seal floating washer • Brass Adjusting Needle



Part #	NPT F	B	C	H	D	F	QTY
PCFC-2	1/8"	1.378"	0.866"	0.709"	0.984"	0.177"	1
PCFC-4	1/4"	1.811"	1.181"	0.787"	1.378"	0.256"	1
PCFC-6	3/8"	1.968"	1.181"	0.984"	1.378"	0.256"	1
PCFC-8	1/2"	2.362"	1.575"	0.984"	1.732"	0.256"	1

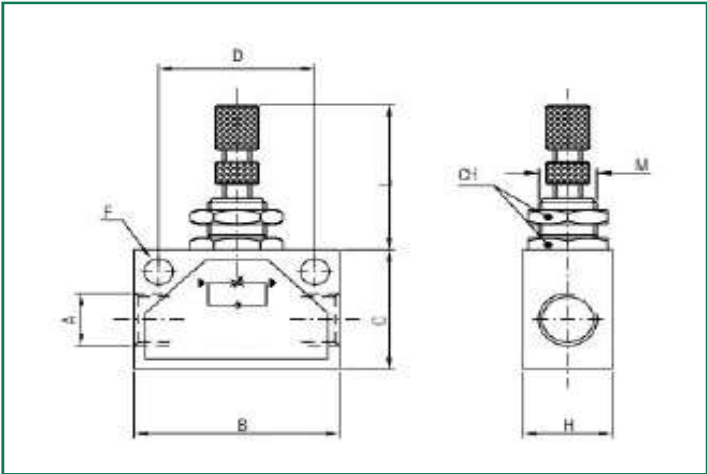
FLOW CHART



Features & Specifications for Needle Valve

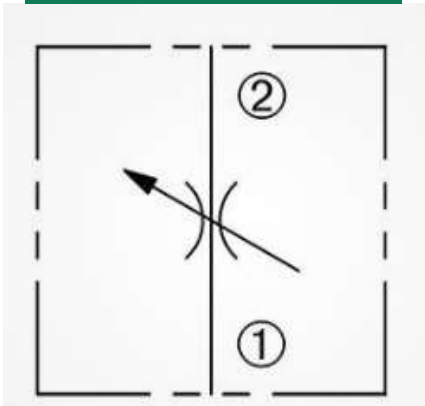
SPECIFICATIONS

TEMPERATURE RANGE	WORKING PRESURE	COMPONENT PARTS AND MATERIAL
-4°F to 176°F (-20°C - 80°C)	Vacuum-250 PSI	<ul style="list-style-type: none">• Brass Adjusting Knob• Brass Nut• Brass Locking Nut• Brass Nipple• Anodized Aluminum Body• NBR O-Ring• Brass Adjusting Needle



Part #	NPT F	B	C	H	D	F	QTY
PCNV-2	1/8"	1.378"	0.866"	0.709"	0.984"	0.177"	1
PCNV-4	1/4"	1.811"	1.181"	0.787"	1.378"	0.256"	1
PCNV-6	3/8"	1.968"	1.181"	0.984"	1.378"	0.256"	1
PCNV-8	1/2"	2.362"	1.575"	0.984"	1.732"	0.256"	1

FLOW CHART



Now that you have your Valves, don't forget your manifolds and tubing.



POLY[®]CONN

Servicing Your Pneumatic Needs For Over 40 Years

**Polyconn[®] the one-stop shop for your
pneumatic needs.**